

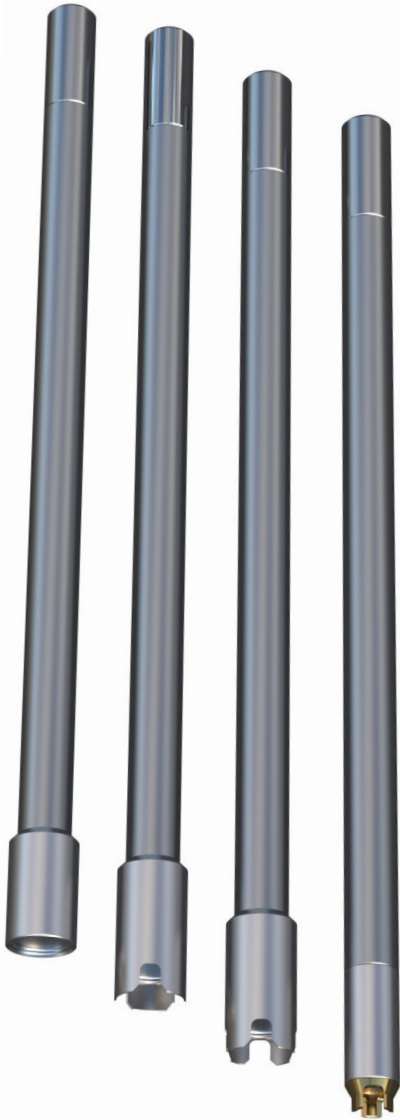
# APT

AXIAL PYRO TORCH



the new standard™

APT restores production by swiftly eliminating failing downhole valves, saving costs without the need for mobilizing a coil tubing unit or workover rig.



## THE APT VALUE

Downhole valve failures pose a common and costly challenge for Oil and Gas Operators, requiring immediate attention to prevent disruptions in well production. MCR's Axial Pyro Torch (APT) Technology eliminates the need for expensive milling operations to address problems with flapper valves or ball valves, facilitating a rapid return to production. The APT's flexible toolkit, conveyed on wireline, empowers operators to seamlessly burn through and eliminate failing downhole valves. Precision downward torch produced by APR is directed toward downhole valve and ensures well integrity is not compromised at any time.

### Applications

- Well obstruction removal
- Downward punching a hole in an obstruction
- Eliminating dropped objects in the well
- Eliminating a stuck flapper valves
- Eliminating a malfunctioning ball valve

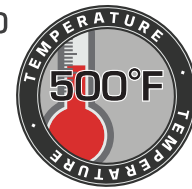
## BENEFITS

- Eradicate failed downhole valves.
- Different nozzle designs allows for the most effective tool to be selected for the type and position of the valve.
- Different nozzle designs allows the reduction in the number of runs required to eradicate the valve.
- Rigless operations that can be conducted on Wireline or Slickline.

UP TO



UP TO



**24/7 SERVICE + SUPPORT + SOLUTIONS**

TEL: 1 (817) 701-5100      EMAIL: sales@mcroiltools.com

WWW.MCROILTOOLS.COM

# APT

AXIAL PYRO TORCH



the new standard™



## APT SPECIFICATIONS FOR 3 1/2" COMPLETION

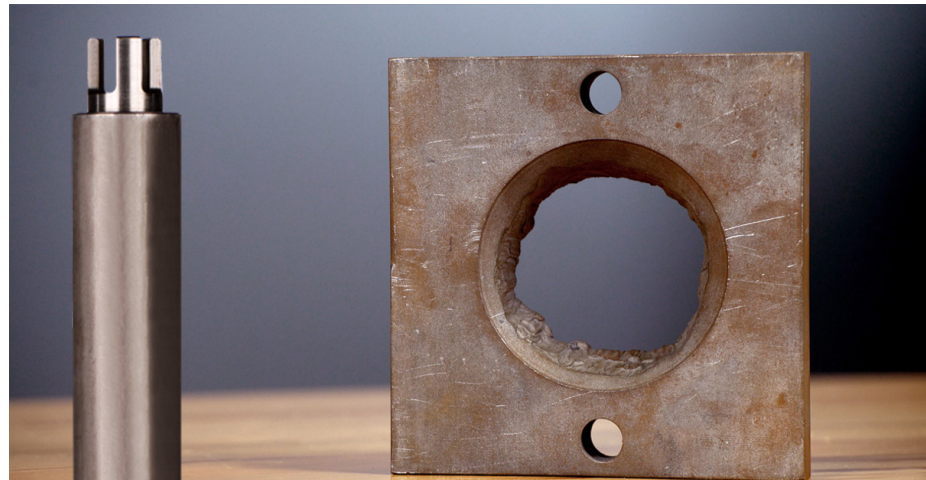
|                           |   |
|---------------------------|---|
| LENGTH:                   | 40.95" (104.01 cm) (Single Nozzle Configuration)<br>45.95" (116.71 cm) (Slotted Nozzle Configuration)<br>39.92" (101.39 cm) (Radial Nozzle Configuration) |
| DIAMETER (Configuration): | 2.00" (5.08 cm) for Single Nozzle Configuration<br>2.60" (6.60 cm) for Slotted Nozzle Configuration<br>2.60" (6.60 cm) for Radial Nozzle Configuration    |
| PRESSURE RATING:          | 0 to 10,000psi (6.9MPa)   |
| TEMPERATURE RATING:       | 500°F (260°C)   |
| CONVEYANCE METHODS:       | Wireline or Slickline   |
| THERMAL GENERATOR:        | High Voltage type, TG-B-150E-01<br>150 Ohm nominal resistance.  |

## HOW IT WORKS

The Axial Pyro Torch is a Non-Explosive downward shooting torch cutter designed to eradicate stuck wellbore valves in 3 1/2 in, 4 1/2 in and 5 1/2 in completions during pipe recovery, fishing and other well intervention operations.

The APT may require multiple runs in the well to completely remove the obstructions from tubing assembly.

The first run creates a hole in the center of the valve. The second run creates four radial slots from center outward. The third run separates the valve into four pieces with a circumferential cut around the interior pipe wall.



**24/7 SERVICE + SUPPORT + SOLUTIONS**

TEL: 1 (817) 701-5100 EMAIL: sales@mcroiltools.com

WWW.MCROILTOOLS.COM